



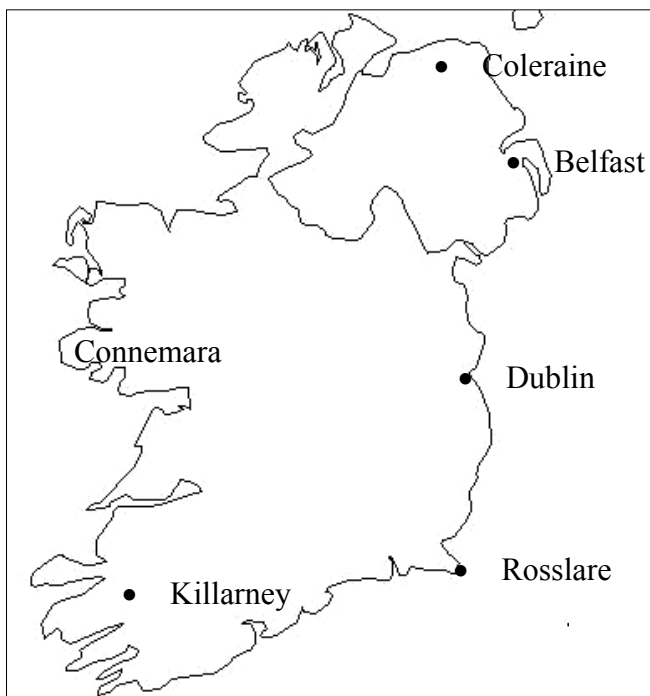
IRELAND

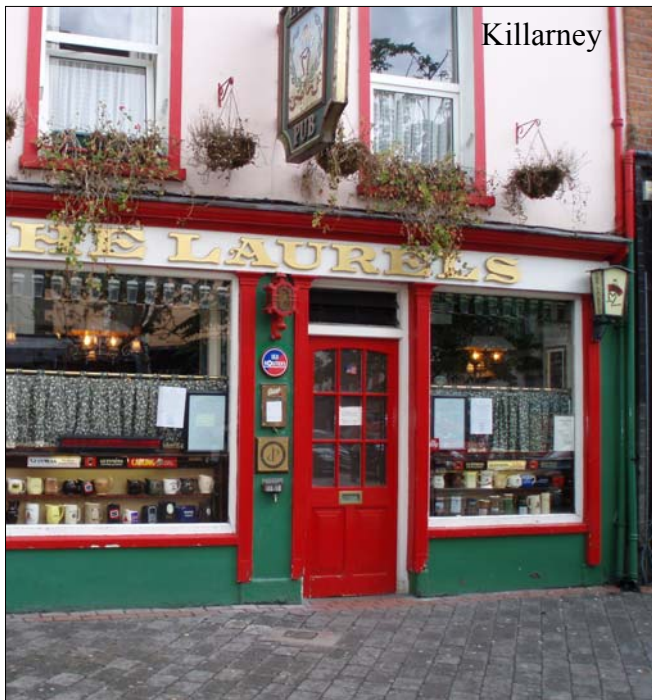
Places to stay :

Town	Description	Ferry routes
		<ul style="list-style-type: none"> • Holyhead - Dublin – 3 ¼ hours • Fishguard - Rosslare – 3 ½ hours • Liverpool - Belfast – overnight or long day crossing
Dublin	Vibrant capital city with a variety of shops, restaurants and traditional Irish music pubs.	Dublin port 10 miles, Rosslare 95 miles, Belfast 103 miles
Coleraine	Prosperous city on the River Bann, near Northern Ireland's North coast. Close to the Giant's Causeway.	Belfast 56 miles, Dublin 142 miles
Killarney	Pretty town in County Kerry, in Southwest Ireland, on the Northeastern shore of Lough Leane in Killarney National Park.	Dublin 186 miles, Rosslare 164 miles
Connemara	National Park in County Galway in the West of Ireland.	Dublin 181 miles, Rosslare 208 miles, Belfast 210 miles

Things to see :

What to see	Location
Wicklow Mountains – some great driving roads	25 miles South of Dublin, 60 miles North of Rosslare
Guinness Factory	Dublin
Giant's Causeway	13 miles Northeast of Coleraine
Carrick-a-rede Rope Bridge	16 miles Northeast of Coleraine
Dingle Peninsula – stunning scenery and exciting coastal drive	50 miles West of Killarney
Ring of Kerry scenic drive	116 mile drive starting in Killarney
Connemara National Park - its beautiful scenery of lakes and mountains	180 miles West of Dublin





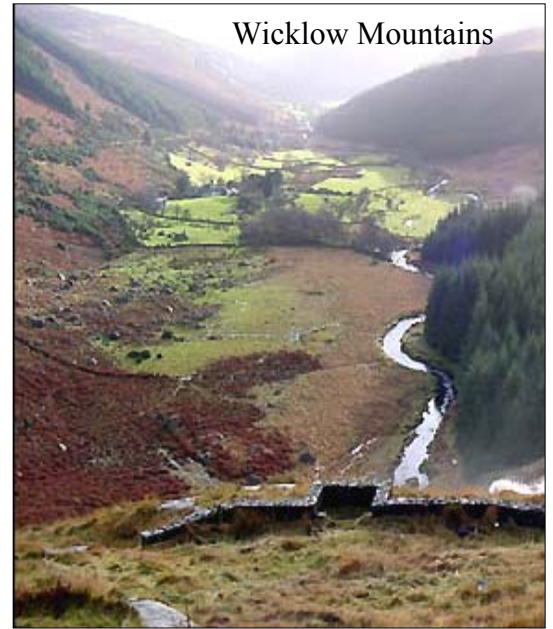
Killarney



Killarney National Park



Giant's Causeway



Wicklow Mountains



Dublin



Carrick-a-rede
Rope Bridge